

Product Range

2025 BROCHURE




SWEETBIRD®
BRISTOL ENGLAND

ZUMA

**BRISTOL®
SYRUP CO.**


 **blendtec®**
COMMERCIAL



Sweetbird is all about getting creative with ingredients and flavours, then pouring this into everything they do so you can make drinks that look and taste delicious every time. Obsessed with perfection, Sweetbird travel the globe to spot new trends and continually experiment with ingredients and recipes – all while steering clear of artificial preservatives* and colourings. This helps ensure the Sweetbird product range not only tastes exceptional but delivers the innovation, versatility and simplicity customers are looking for.



Follow @hellosweetbird for recipes, product news and inspiration



*except pureé, Liquid Frappé & Granita Base, sugar-free syrups, hazelnut and toffee nut syrups.

SYRUP



CLASSIC SYRUPS (1Ltr)

FLAVOUR	PO CODE
Almond	NSB100
Amaretto	NSB101
Brown Sugar	NSB118
Cane Sugar	NSB102
Caramel (SF)	NSB103
Chai	NSB104
Chocolate	NSB105
Cinnamon	NSB107
English Toffee	NSB108
French Vanilla	NSB109
Gingerbread	NSB110
Hazelnut (SF)	NSB111
Irish Cream	NSB112
Macadamia Nut	NSB120
Mint	NSB113
Speculoos	NSB117
Vanilla (SF)	NSB114
White Chocolate	NSB115



(SF) these syrups are also available in our sugar-free collection, on the page opposite

CREATIVE SYRUPS (1Ltr)

FLAVOUR	PO CODE
Butterscotch	NSB200
Caramelised Almond	NSB223
Chilli	NSB201
Cinnamon Bun	NSB220
Coconut	NSB202
Cookie Dough	NSB225
Eggnog (seasonal)	NSB203
Honeycomb	NSB212
Mince Pie	NSB222
Peanut Butter	NSB205
Pistachio	NSB219
Praline	NSB224
Popcorn	NSB221
Pumpkin Spice (seasonal)	NSB206
Rose	NSB218
Salted Caramel (SF)	NSB207
S'mores (seasonal)	NSB208
Toasted Marshmallow (seasonal)	NSB209
Toffee Nut	NSB216



(SF) this syrup is also available in our sugar-free collection, on the page opposite
(seasonal) these syrups may not be available all year round as they are produced for certain seasons

SYRUP



BOTANICAL SYRUPS (1Ltr)

FLAVOUR	PO CODE
Hibiscus	NSB454
Lavender	NSB455
Mojito Mint	NSB456
Rose	NSB450



All Sweetbird syrups:

- Packaging Case: 6 x 1 litre
- 30% Post-consumer recycled plastic bottles
- Registered with The Vegan Society



LEMONADE SYRUPS (1Ltr)

FLAVOUR	PO CODE
Lemonade	NSB600
Raspberry & Pomegranate	NSB602
Pink Guava & Lime	NSB603



SUGAR-FREE SYRUPS (1Ltr)

FLAVOUR	PO CODE
Caramel	NSB500
Hazelnut	NSB502
Lemon Iced Tea	NSB509
Peach Iced Tea	NSB504
Raspberry Iced Tea	NSB507
Salted Caramel	NSB506
Unflavoured	NSB505
Vanilla	NSB503



SYRUP



FRUIT SYRUPS (1Ltr)

FLAVOUR	PO CODE
Banana	NSB300
Cherry	NSB302
Dragon Fruit & Papaya	NSB315
Grenadine	NSB313
Lime	NSB304
Lychee	NSB317
Mango	NSB319
Orange	NSB305
Peach	NSB307
Pineapple	NSB318
Raspberry	NSB309
Strawberry	NSB310
Watermelon	NSB314



ICED TEA SYRUPS (1Ltr)

FLAVOUR	PO CODE
Cherry Blossom Iced Tea	NSB407
Cucumber & Mint Iced Green Tea	NSB405
Iced Tea	NSB400
Jasmine Lime Iced Tea	NSB401
Passionfruit & Lemon Iced Tea	NSB402
Peach Iced Tea (SF)	NSB403
Raspberry Iced Tea (SF)	NSB404
Sugar-free Lemon Iced Tea	NSB509
Watermelon Iced Green Tea	NSB406



(SF) these syrups are also available in our sugar-free collection, which can be found on the previous page

FUSIONS+ SYRUPS (1Ltr)

FLAVOUR	PO CODE
Mango and Passionfruit Vit B	NSB550
Lime and Pink Guava Vit C	NSB551
Apple and Rhubarb Caffeine	NSB552



SYRUP



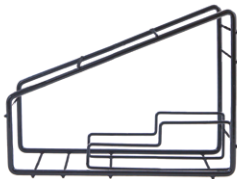
RETAIL SYRUPS (6 x 250ml glass bottles)

FLAVOUR	PO CODE
Caramel	NSB701
Hazelnut	NSB703
Vanilla	NSB702



DISPLAY STAND

A038



SYRUP PUMP

A035



FRAPPÉ



FLAVOUR	PO CODE
Caffé (vegan)	B361D
Chocolate	B365D
Mocha	B362D
Sticky Toffee	B364D
Vanilla Bean (vegan)	B363D
Liquid Frappé & Granita Base (vegan)	B358



- Packaging:
 - Tubs - 2 x 2kg tubs
 - Bags - 4 x 1kg bags
 - Liquid Frappé and Granita Base - 4 x 1.9 litre bottles
- Free from artificial colours and flavours
- Free from preservatives *
- Registered with The Vegetarian Society
- Liquid Frappé & Granita Base, Vanilla Bean and Caffé Frappés registered with The Vegan Society

*except Liquid Frappé & Granita Base



LARGE SCOOP 60CC
A051 - For use with Sweetbird Frappés



FRAPPÉ & GRANITA PUMP
A044



PUREÉ

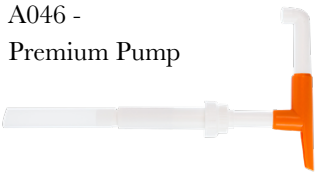


FLAVOUR	PO CODE
Banana	B601A
Mango	B603A
Passionfruit	B604A
Raspberry	B605A
Strawberry	B606A



- Packaging - 6 x 1 litre bottles
- Made with real fruit
- Free from artificial colours
- Gluten and dairy free
- Registered with The Vegan Society

A046 -
Premium Pump



SMOOTHIE



FLAVOUR	PO CODE
Mango & Passionfruit	B398B
Mixed Berry	B397B
Peach	B392B
Strawberry	B395B



- Packaging - 8 x 1 litre cartons
- Free from artificial colours, preservatives and flavours
- Made with real fruit
- Registered with The Vegan Society



SWEETBIRD.COM

ZUMA

Zuma has been creating their collection for almost 20 years, ensuring there's a drink for everyone. The hot chocolate blends are original, dark, single origin, Fairtrade, thick and white. Zuma have also created sauces, chai, toppings and plant powders*. The range is simple, just like the ingredients. It's not that Zuma are stubborn - they just won't compromise when it comes to taste and quality.



Follow @zuma.drinks or visit zumadrinks.com to see all they have to offer



*Turmeric Chai includes natural flavourings that are not plant based

HOT CHOCOLATE

ZUMA

FLAVOUR	PO CODE	Packaging - 4 x 2kg tins
Dark - 33% cocoa (bags)	B302C	
Dominican Republic - 35% cocoa (bags)	B323	
Fairtrade Dark - 33% cocoa (tins)	B307C	
Original - 25% cocoa (bags)	B304C	
Original - 25% cocoa (tins)	B305C	
Thick (tins) - 25% cocoa	B306C	
White (bags)	B308C	

- Free from artificial colours, flavours and preservatives
- Registered with The Vegan Society (except White Chocolate)

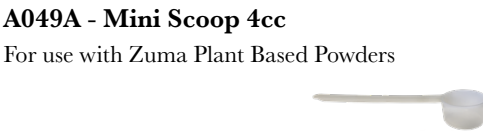
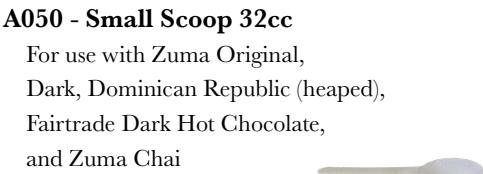
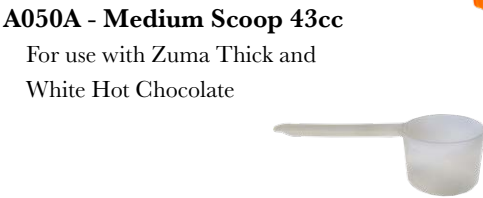
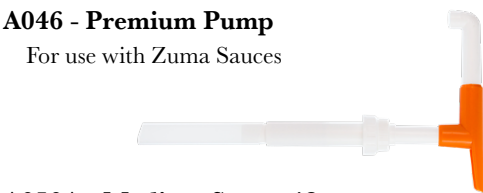


SAUCES

ZUMA

FLAVOUR	PO CODE	
Caramel	B923	<ul style="list-style-type: none">• Free from artificial colours• White and Caramel Sauce registered with The Vegetarian Society• Dark Sauce registered with The Vegan Society
Dark	B920	
White	B922	

Packaging - 4 x 1.9 litre bottle



CHAI

ZUMA

FLAVOUR	PO CODE	
Spiced	B366C	
Vanilla	B367C	
<ul style="list-style-type: none">• Packaging - Case 4 x 1kg tins• Free from artificial colours, flavours and preservatives• Registered with The Vegan Society		



PLANT BASED POWDERS*

ZUMA

FLAVOUR	PO CODE	
Beetroot	B375	
Matcha	K040A	
Turmeric Chai	B368	

- Packaging - Case 10 x 100g pouches
- Registered with The Vegan Society
- No added sugar



*Turmeric Chai includes natural flavourings that are not plant based

TOPPINGS

ZUMA

TOPPING	PO CODE	
Biscuit Crumb	G106	
Strawberry Pieces	G107	
Pineapple Chunks	G108	
Mini Marshmallows	B5001	

- Packaging:
 - Case 8 x 250g pouches - Biscuit Crumb
 - Case 8 x 30g pouches - Strawberry Pieces
 - Case 8 x 50g pouches - Pineapple Chunks
 - Case 4 x 1Kg bags - Mini Marshmallows
- Biscuit Crumb, Strawberry Pieces and Pineapple Chunks Registered with The Vegan Society



BRISTOL[®] SYRUP CO.

The Bristol Syrup Company is a collaboration between Beyond the Bean and the best of Bristol bartenders, distilling down years of experience to create a range of quality cocktail syrups, purées and juices.

From classic bar staples like orgeat and vanilla through to innovative, award-winning shrubs, sherbets and disco, our syrups are designed for bartenders by bartenders. We believe syrup and purée shouldn't be an afterthought when making cocktails. The quality and taste should be as well considered as the chosen spirits, mixers and garnishes, as well as tasting authentic to the name on the label.

Our syrups are favoured by bartenders around the country, stocked in many of the UK's top 50 Cocktail Bars 2025 and chosen by both high-volume bars and luxury venues. Made in our AA BRCGS accredited Bristol based syrup plant.

Visit bristolsyrupcompany.com  



SYRUP

FLAVOUR	PO CODE	FLAVOUR	PO CODE
No.1 Simple 1:1	BSC001A	No.16 Strawberry Shrub	BSC016A
No.2 Simple 2:1	BSC002A	No.17 Watermelon	BSC017A
No.3 Demerara	BSC003A	No.18 Lime Sherbet	BSC018A
No.4 Raspberry	BSC004A	No.19 Disco Grenadine	BSC019A
No.5 Passionfruit	BSC005A	No.20 Grapefruit Sherbet	BSC020A
No.6 Grenadine	BSC006A	No.21 Ginger	BSC021A
No.7 Orgeat	BSC007A	No.22 Mulled Spice	BSC022A
No.8 Elderflower	BSC008A	No.23 Yuzu Sherbet	BSC023A
No.9 Falernum	BSC009A	No.24 Disco Blue	BSC024A
No.10 Coconut	BSC010A	No.25 Disco Bubblegum	BSC025A
No.11 Pineapple & Coconut	BSC011A	No.26 Caramel	BSC026A
No.13 Raspberry Shrub	BSC013A	No.27 Nogave	BSC027A
No.14 Cherry & Vanilla	BSC014A	No.28 Blackberry Shrub	BSC028A
No.15 Vanilla	BSC015A	No.29 Green Chilli	BSC029A



PURÉES

FLAVOUR	PO CODE
Lime Juice	BSC101
Lemon Juice	BSC102
Mango Purée	BSC103
Passionfruit Purée	BSC104
Raspberry Purée	BSC105
Strawberry Purée	BSC106
Peach Purée	BSC107





Blendtec are the best, most reliable blenders on the market, designed for the high volume of ice blended drinks customers need. They're the worldwide industry standard and are powerful, tough and clever too. All Blendtec blenders have pre-programmed variable speeds, auto shut off & drinks cycles that ensure consistently blended drinks every time.

With models to suit all requirements, and budgets, they have the perfect blender for you and your business.



BLENDERS



V208 - Connoisseur 825
No jars



V213 - Stealth 885 Blender
No jars



V203 - SpaceSaver 825
No jars



V206 - Chef
with x1 Wildside Ultra
XL Jar & Tamper



V205 - Bar Blender
with x1 90oz Wildside Jar
& Cone Lid



V122A - Connoisseur
Motor Enclosure



V121A - Stealth
Sound Enclosure



V121 - Connoisseur
Sound Enclosure

JARS & LIDS



V111A - FourSide 1L
Lid not included



FourSide 1L
Jars & Hard Lid Set
V111J - FourSide Pink
V111H - FourSide Yellow
V111Q - FourSide Blue



V112A - WildSide 1.5L
Lid not included



WildSide 1.5L
Jars & Hard Lid Set
V112F - WildSide Pink
V112E - WildSide Yellow
V112G - WildSide Blue



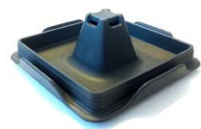
V112H - Wildside Ultra Jar
& Lid with spout 1.5L
Lid included



V111M - Cold Foam Frothing
1L
Lid not included



V111D Twister includes
Jar, Twister lid, Vented gripper lid
and spatula



V112C - Cone



V112D - Flat Hard



V112B - Vented Gripper



V112 - Flat Soft

RAPID RINSER

- V133 - Rapid Rinse Station - full kit (on-counter instillation)
- V134 - Rapid Rinser - only (in-sink instillation)
- V135A - Rapid Rinser, Lid Attachment
- V136 - Rapid Rinser Suction Cup Feet





Cafetto is the industry leader in effective eco-friendly and organic solutions, offering cleaning products to improve equipment performance and simplify cleaning processes.



CLEANING



E202
MFC Blue milk frother
cleaning liquid concentrate - 1L



E207
MFC Green milk frother
cleaning liquid concentrate - 1L



E204
Grinder Cleaner - GC2 - 450g



E203
TEVO Maxi Tablets - 150 tablets



E208
Espresso Machine Cleaner - EC2 - 1.1Kg



E201
EVO Espresso Machine Cleaner - 1.1Kg





Gear.

BARISTA KIT

TAMPERS Black hand tamper Rubber counter tamp pad	PO CODE A018 A021	PRODUCT INFO 57mm / flat 1
MILK JUGS Etched stainless steel 0.3 litre Etched stainless steel 0.6 litre Etched stainless steel 1 litre Black Teflon 0.3 litre Black Teflon 0.6 litre	PO CODE A004C A005 A006 A010E A010F	PRODUCT INFO 1 1 1 1 1
SILICONE MILK JUG HANDLE COVERS 20oz/600ml Red 20oz/600ml Blue 20oz/600ml Yellow	PO CODE A042 A042A A042B	PRODUCT INFO 1 1 1
THERMOMETERS Standard Fahrenheit thermometer Centigrade thermometer Long dual thermometer Long thermometer clip Triangular thermometer clip	PO CODE A001 A001C A003 A004 A004A	PRODUCT INFO 1" dial / 5" probe 1 1" dial / 5" probe 2" dial / 8" probe 1 1
CLEANING Pallo Grinderminder Brush Pallo Coffectool Steamy Wanda - small green Steamy Wanda - large red	PO CODE E007 E020 E013 E014	PRODUCT INFO 1 1 6mm bristle diameter 7.25mm bristle diameter
COCKTAIL KIT Sweetbird Cocktail Shaker Sweetbird Long Copper Spoon	PO CODE A100 A104	PRODUCT INFO 1 1

ESPRESSO ESSENTIALS

	PO CODE	PRODUCT INFO
ILSA Italian cocoa shaker (stainless steel)	A011	1
BTB branded lined shot glasses	A013	2oz / 12 pack
BTB branded lined shot glass	A013A	2oz / single
Chrome mini whisk	A014	1
Milk spatula (stainless steel)	A015	1
On Balance digital grinder scales	A030	1
Squirty bottle	A031	35cl / 12oz
Barista Cloth Set	A080	Pack of 4
Rubber backflush insert	E003	1
BTB Flicker	E001`	1
KNOCKBOXES	PO CODE	PRODUCT INFO
Square open base knockout box	A023	1
Square closed base knockout box	A024	1
Rubber gasket for knockout box	A039	1
SPOONS	PO CODE	PRODUCT INFO
Long handled latte spoon	A047	1
7 gram coffee scoop	A055	1
iSi CREAM WHIPPER	PO CODE	PACK SIZE/ PRODUCT INFO
iSi cream whipper	A059	1 litre
iSi replacement nitrous oxide gas charges	A060	10 x 8.4g
CREAM WHIPPER SPARE PARTS	PO CODE	PRODUCT INFO
iSi spare nozzle gasket turret (3042)	RA001	1
iSi spare nozzle rose (3048)	RA002	1
iSi head valve (2941)	RA003	1
iSi gasket (6334)	RA004	1
iSi charge holder (3045)	RA006	1
SAUCE PUMP	PO CODE	PRODUCT INFO
Server sauce pump stainless steel	A028	1
Server sauce jar stainless steel	A029	1

SAUCE PUMP SPARE PARTS	PO CODE	PACK SIZE
Pump brush (82049)	RB001	1
Pump brush (21 82526)	RB002	1
Collar gagging 25oz reduction (82022)	RB003	1
Collar locking	RB003A	1
Insert head (82018)	RB004	1
Knob black (82023-000)	RB005	1
Nut discharge tube (82027)	RB006	1
O-ring (1 05127)	RB007	1
O-ring (1 5/16 82323)	RB008	1
Piston & stem assembly (82013)	RB009	1
Replacement seal kit (83003)	RB010	1
Seal white (part of 83003 83005)	RB011	1
Spare part kit (82533)	RB012	1
Spring (82016)	RB013	1
Tube head (82017)	RB014	1
Washer (82015)	RB015	1

CUPS

CHEVRON CUPS (PLA)	PO CODE	PACK SIZE
6oz Lemon Chevron	C005	2000
12oz Granite Chevron	C012	1000
HOT CUP LIDS	PO CODE	PACK SIZE
6oz traveller lid - white	C005A	1000
12-20oz Solo traveller lid (T316R) - white	C019	1000
COLD CUPS AND LIDS	PO CODE	PACK SIZE
12-14oz clear Solo cup (Squat)	C034A	1000
Clear Solo domed lid (DLR626) to fit TP12S	C039	1000
Sweetbird Reusable Cold Cup & Lid	C100	100
SAMPLE CUPS AND LIDS	PO CODE	PACK SIZE
Zuma branded 4oz Solo paper sample cup (case)	C003	1000
Zuma branded 4oz Solo paper sample (sleeve)	SSC003	50
MISC.	PO CODE	PACK SIZE
Straw - 8" long, Paper / 8mm diameter / individually wrapped	C051	100
Wooden stick stirrer	C044	1000

AN AWARD WINNING COLLECTION

Sweetbird, Zuma and Bristol Syrup Company have won multiple awards over the years including the coveted 3 star Great Taste Award for Sweetbird Rose syrup.



BEYOND[®]
THE BEAN
FORWARD THINKING IN DRINKING

e: sales@beyondthebean.com

t: +44 (0) 117 953 3522

[f](#) [@](#) beyondthebean
beyondthebean.com